



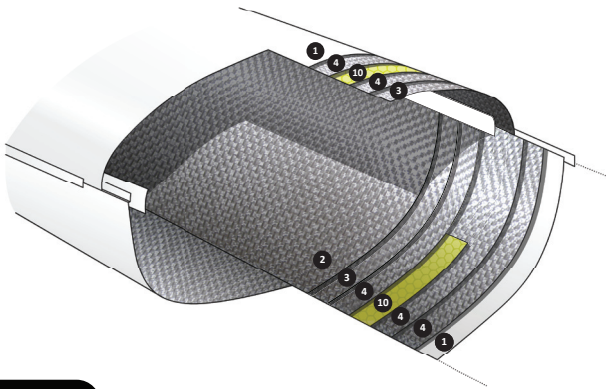
TCT CONSTRUCTION

Our kayaks feature Tiderace Core Technology – a multi-layer laminate with an additional resin supported core that's designed to take abuse in rock gardens, big surf and expedition use. Performance laminates that give significantly stronger, stiffer and lighter kayaks, far exceeding the typical industry standard.



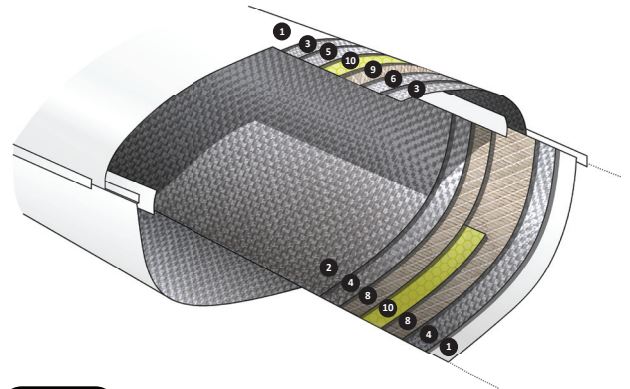
CLASSIC

Wet Laminate deck and hull



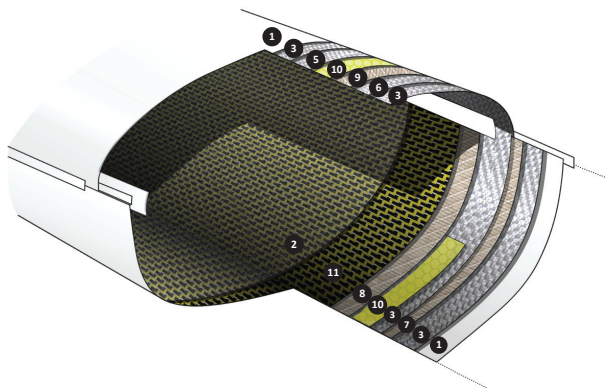
G-CORE

Wet Laminate deck, Vacuum hull



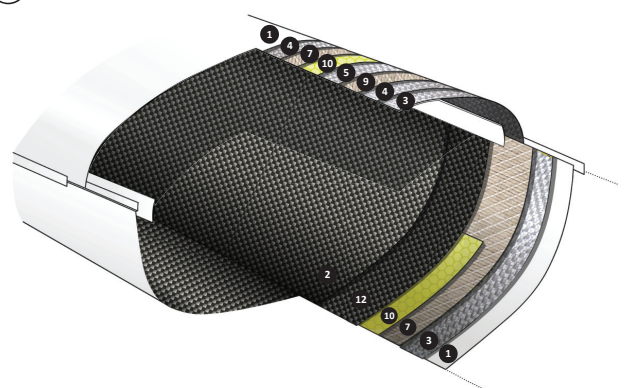
HARDCORE

Vacuum deck and hull



CARBON-PRO

Vacuum deck, infused hull



- | | |
|-----------------------|------------------------|
| ① Gel Coat | ⑦ Glass biaxial lite |
| ② Glass cloth s-lite | ⑧ Glass biaxial medium |
| ③ Glass cloth lite | ⑨ Glass biaxial heavy |
| ④ Glass cloth medium | ⑩ Soric SF2 core |
| ⑤ Glass cloth heavy | ⑪ Carbon Kevlar cloth |
| ⑥ Glass cloth s-heavy | ⑫ Carbon cloth |



All constructions use a specially formulated epoxy resin which is stronger and tougher than polyester or vinylester resin.



Epoxy compatible polyester gelcoat for easy field repair.



All constructions are post, heat-cured.



Bonded "biscuit tin" side seam with additional inside and outside tape seams.